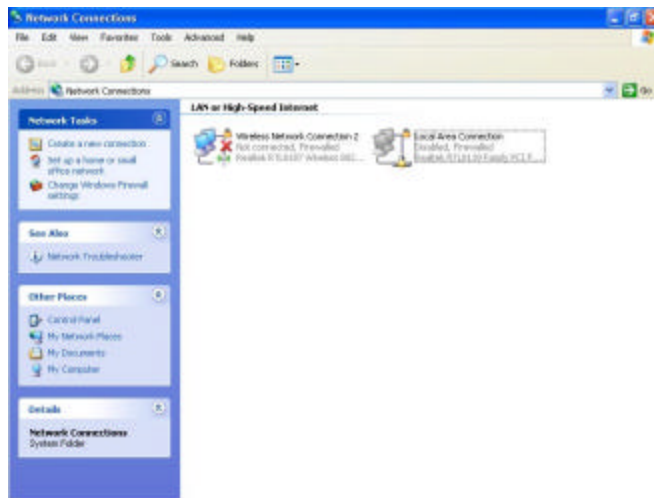


Instructions to connect LW6000 with VitalNet

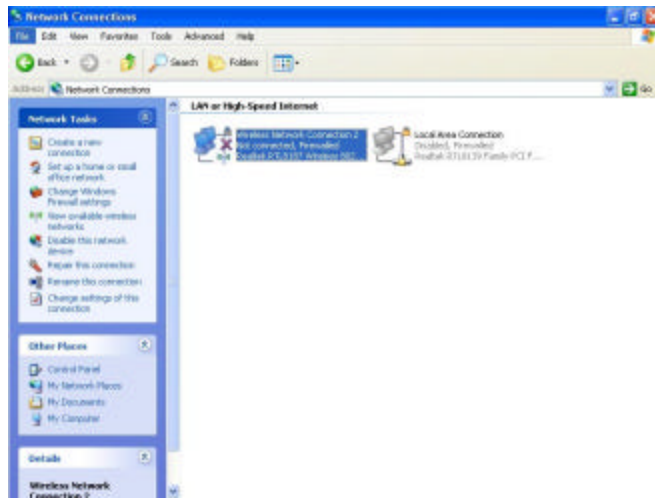
- 1- With the Lifewindow turned-OFF, connect one PC keyboard in the rear panel PS2 or USB (depending on the keyboard connector) of the Lifewindow.
- 2- Turn-on the Lifewindow and wait for the unit start running the LW software.
- 3- To stop the Lifewindow software, simultaneously press and hold the **FREEZE** and **NIBP START** on the LifeWindow keyboard and click on the **TRACES** icon on the LifeWindow taskbar **ICONS**. The screen will stop flashing messages and the LifeWindow software will close.
- 4- Click on **START**, then in **Settings** and then click in the **Network Connections**.



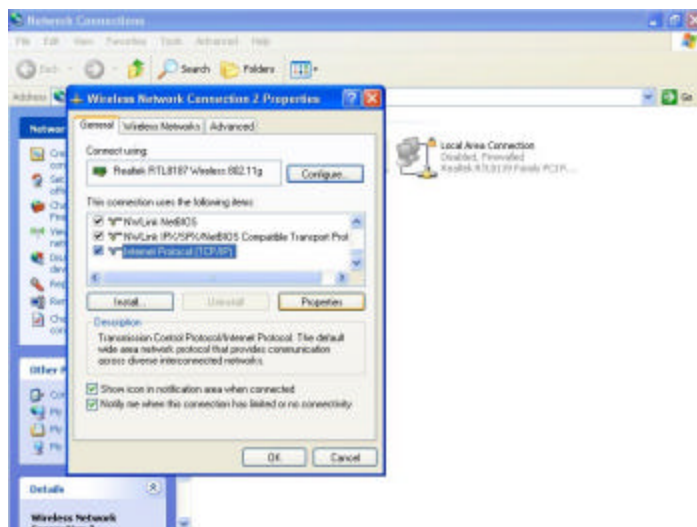
- 5- The **Local Area Connection** need to be **DISABLED**. If it is not **DISABLED**, click on the **Local Area Connection** to select it (turn blue), and click on File and click on Disable.



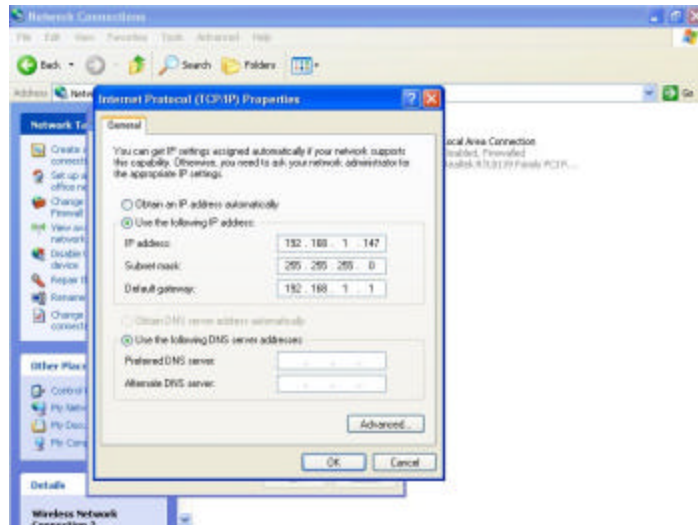
- 6- Click on the **Wireless Network Connection** to select it (turn blue), and click on **File** and click on **Properties**.



- 7- In the **General** tab, scroll down and click on the **Internet Protocol (TCP/IP)** to select it (turn blue) and click in **Properties**.



- 8- In the **General** tab click on the **Use the following IP address:** Using the keyboard enter the **IP address**, **Subnet Mask** and **Default Gateway** accordingly with the following information.



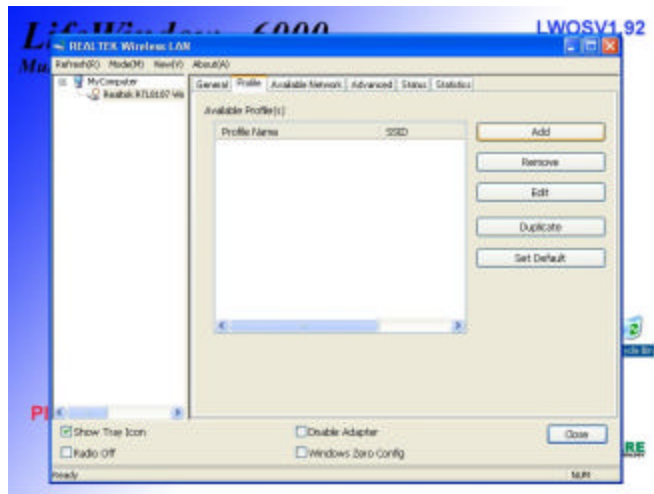
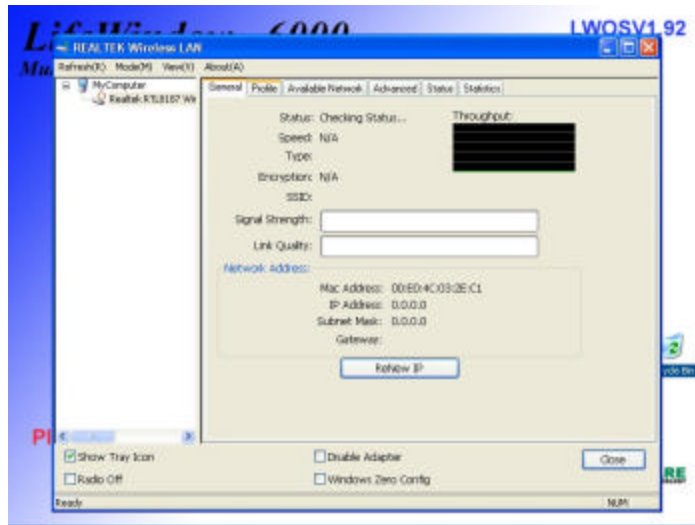
- 9- Type the **IP address**, when finished press **TAB** to move to the **Subnet Mask** field, which come automatically with the value, click on **TAB** again and type the **Default Gateway**.
- 10- Let the **DNS** fields in blank and click on **OK**.
- 11- Click on **Close** to finish the IP Address settings.
- 12- Note: Each Lifewindow connected to the same VitalNet shall have a different IP Address or an address conflict will occur.
- 13- Close the Network Connections screen.

LW6000 SN	IP Address	Subnet mask	Default Gateway
354996	192.168.1.147	255.255.255.0	192.168.1.1
355002	192.168.1.148	255.255.255.0	192.168.1.1
355010	192.168.1.149	255.255.255.0	192.168.1.1
355014	192.168.1.150	255.255.255.0	192.168.1.1
355015	192.168.1.151	255.255.255.0	192.168.1.1

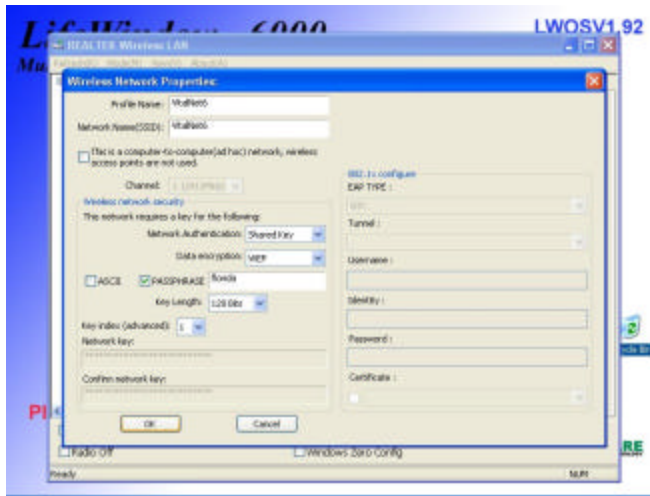
- 14- Double-click on the **Wireless Level Icon** located on the right of the **Taskbar**.



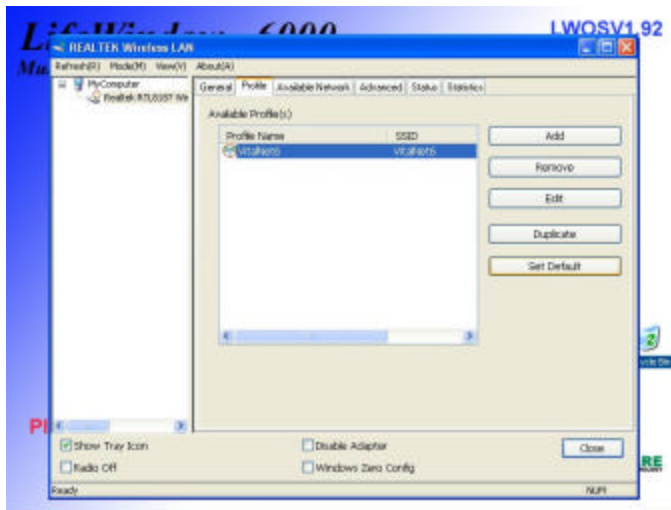
15- In the **REALTEK Wireless LAN** screen click on **Add**.



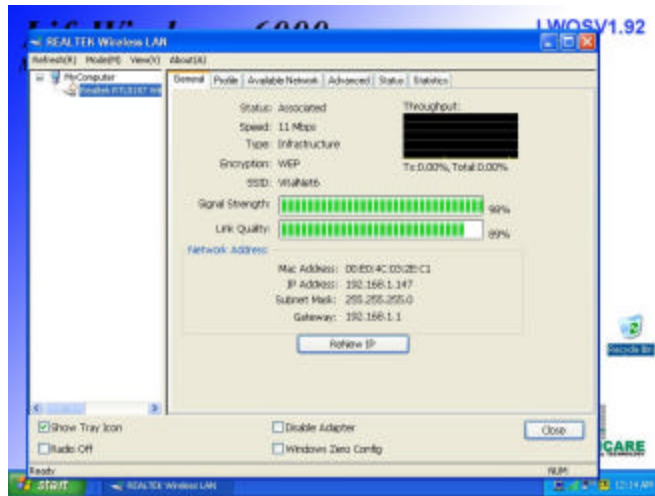
16- In the **Wireless Network Properties** screen, using the keyboard, type the **Profile Name** as **VitalNet6**. Type the **Network Name(SSID)** as **VitalNet6**. The **Network Authentication**, scroll down the menu and select **Shared Key**. The **Data encryption** select to **WEP**. Click to set **PASSPHRASE** and select the **Key Length** to **128 Bits**. On the **PASSPHRASE** field type **florida** (all lower case). The encryption key will be generated automatically. Click **OK**.



17- The VitaNet6 Profile Name and SSID will be displayed in the **REALTEK Wireless LAN** screen. Click on the **VitalNet6** name and click on the **Set Default**.



18- Click on the General tab. If the Lifewindow monitor is in the proximity of the VitalNet Central Station wireless router, the Signal Strength and Link quality indicators will display a green bar-graph indicating the connection with the VitalNet Central Station wireless router.



- 19- Click on Close to finish the wireless settings.
- 20- Click on Start and Shut Down and Restart to reset. The Lifewindow will restart and run the Lifewindow software.

Note: The Lifewindow will start send information to the VitalNet Central Station only after a patient is admitted in the Patient Admission menu and you click on **Admit Patient & Start Monitoring**.

Note: During Patient Admission, choose different Bed Number for each Lifewindow connected to the same VitalNet, or conflicts can occur in the VitalNet screen.